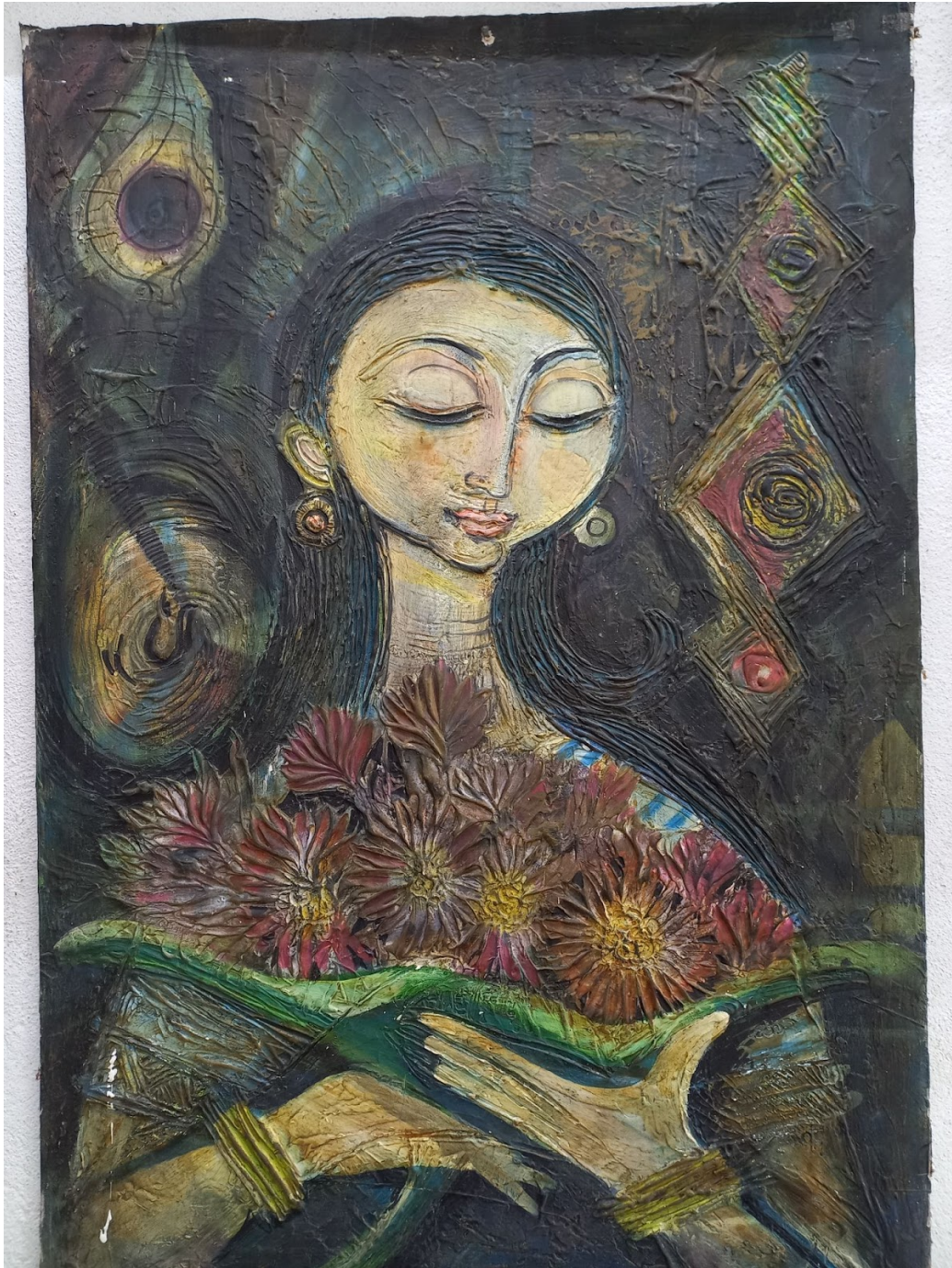


# ආබයාන *narrations*

**Open access, refereed biannual journal**  
**ISSN 2478-0642 | Volume 08 | Issue 01 | 2023**



**Center for Indigenous Knowledge and Community Studies (CIKCS)**  
**Sabaragamuwa University of Sri Lanka**

# ආවණන *narrations*

*Open access, refereed biannual journal*

ISSN 2478-0642

Volume 08 | Issue 01 | 2023

Sabaragamuwa University of Sri Lanka



Attribution-NonCommercial-ShareAlike

CC BY-NC-SA

Legal Code: <https://creativecommons.org/licenses/by-nc-nd/4.0/legalcode>

## Editorial Board

### Editor in Chief

**Dr. Pradeep Uluwaduge**, Department of Social Sciences, Faculty of Social Sciences and Languages, Sabaragamuwa University of Sri Lanka

### Editors

**Prof. Sarath Ananda**, Department of Social Sciences, Faculty of Social Sciences and Languages, Sabaragamuwa University of Sri Lanka

**Prof. Hiniduma Sunil Senevi**, Department of Languages, Faculty of Social Sciences and Languages, Sabaragamuwa University of Sri Lanka

**Prof. E. P. N. Udaya Kumara**, Department of Natural Resources, Faculty of Applied Sciences, Sabaragamuwa University of Sri Lanka

**Dr. G. K. C. S. De Silva**, Department of Languages, Faculty of Social Sciences and Languages, Sabaragamuwa University of Sri Lanka

**Dr. Jayaprasad Welgama**, Department of Social Sciences, Faculty of Social Sciences and Languages, Sabaragamuwa University of Sri Lanka

**Prabath Galagamage**, Visiting Lecturer, Department of Social Sciences, Faculty of Social Sciences and Languages, Sabaragamuwa University of Sri Lanka

# ආවසාන *narrations*

*Open access, refereed biannual journal*

ISSN 2478-0642

Volume 08 | Issue 01 | 2023

Sabaragamuwa University of Sri Lanka



---

## Language Editors

**Dr. Noel Dassanayakea**, Language Editor in English, Senior Lecturer, Department of Languages, Faculty of Social Sciences and Languages, Sabaragamuwa University of Sri Lanka

**S. P. S. P. Weerasinghe**, Language Editor in English, Senior Lecturer, Department of Languages, Faculty of Social Sciences and Languages, Sabaragamuwa University of Sri Lanka

**Nalaka Jayasena**, Language Editor in Sinhala, Visiting Lecturer, Gampaha Wickramarachchi University of Indigenous Medicine

# ආවණන *narrations*

*Open access, refereed biannual journal*

ISSN 2478-0642

Volume 08 | Issue 01 | 2023

Sabaragamuwa University of Sri Lanka




---

## Panel of Reviewers

**Prof. Emer. Kalinga Tudor Silva**, Department of Sociology, Faculty of Arts, University of Peradeniya

**Senior Prof. Premakumara De Silva**, Department of Sociology, Faculty of Arts, University of Colombo

**Prof. H. M. D. R. Herath**, Department of Sociology, Faculty of Arts, University of Peradeniya

**Prof. Sarath Ananda**, Department of Social Sciences, Faculty of Social Sciences and Languages, Sabaragamuwa University of Sri Lanka

**Prof. Hiniduma Sunil Senevi**, Department of Languages, Faculty of Social Sciences and Languages, Sabaragamuwa University of Sri Lanka

**Dr. Pradeep Uluwaduge**, Department of Social Sciences, Faculty of Social Sciences and Languages, Sabaragamuwa University of Sri Lanka

**Dr. Upul Lekamge**, Department of Social Sciences, Faculty of Social Sciences and Languages, Sabaragamuwa University of Sri Lanka

**Dr. Upul Priyantha Gamage**, Department of Sinhala, Faculty of Language Studies, Buddhist and Pali University of Sri Lanka

**Dr. Manoranjana Herath**, Department of Sculpture, Faculty of Visual Arts, University of the Visual & Performing Arts

**Dr. Sumudu Premachandra**, High Court Judge, Civil Appeal Kandy

Submit your academic papers to [director@cikcs.sab.ac.lk](mailto:director@cikcs.sab.ac.lk)

## Technical Specifications

**Fonts**

Times New Roman  
Abhaya Libre (Unicode)

**Page Size**

A4 - 8.27 x 11.67 inches

**Format**

Portable Document Format (PDF)

**Full Journal access**

[https://www.sab.ac.lk/cikcs/akyana\\_narrations](https://www.sab.ac.lk/cikcs/akyana_narrations)

**SUSL e-Repository**

<http://repo.lib.sab.ac.lk:8080/xmlui/handle/123456789/561>



[https://www.researchgate.net/institution/Sabaragamuwa\\_University\\_of\\_Sri\\_Lanka](https://www.researchgate.net/institution/Sabaragamuwa_University_of_Sri_Lanka)

*Cover Page*

*Upul Ruhunage*

*Ruhunage Art Gallery, Elpitiya Rd ,Wathugedara , Ambalangoda, Sri Lanka*

## Table of Contents

<i>Small-Scale Women Entrepreneurs in the Tourism Sector: Do Business Associations Help?</i> _____	7
මහනුවර නාගරික කලාපයේ දායක සංඥාවලින් නිරූපිත භාෂා භූ දර්ශනය_____	30
ශ්‍රී ලංකාවේ ඉ-රාජ්‍ය ප්‍රතිපත්තියෙහි සාර්ථකත්වයට ආයතනික ධාරිතාවයේ බලපෑම_____	46
යක්‍ෂාවේගය සඳහා වන සුව කිරීමේ ප්‍රතිකර්මය ලෙස නොවිලය: සමාජ මානව විද්‍යාත්මක කියැවීමක්_____	71
<i>Domestication and Exclusion from Voices: A Study Based on Women in Estate Community in Sri Lanka</i> _____	104
නාග සංකල්පය විනුණය විෂයෙහි කලාත්මක ඇගයීම් හා දායකත්වය ආබාසන: වසම්මලේ, ගිරා පොකුණු හෙල හා කුඩුම්බිගල යන ස්ථානවල බිතු සිතුවම් ඇසුරෙනි_____	133